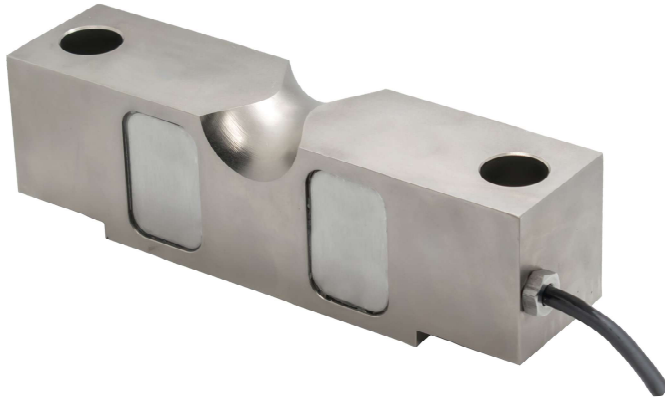


Double Ended Shear Beam Load Cell

ED1

The Accurate, Low Cost and Robust Weight Measurement Option



Technical Specifications

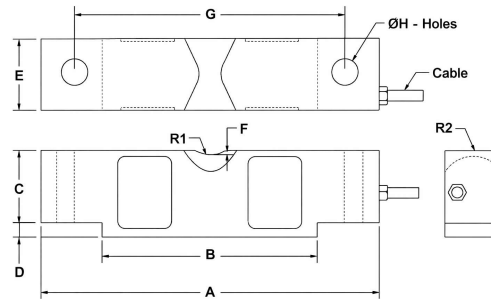
Model	ED1
Capacity	5 to 100 T
Sensitivity	3mV/V
Non-Linearity	±0.025% FS
Hysteresis	±0.02% FS
Repeatability	±0.01% FS
Creep (30 min)	±0.03% FS
Zero Balance	±1%FS
Temperature Compensated Range	10°C ~ +50°C
Operating Temperature Range	0°C ~ +60°C
Input Resistance	770 ± 20.0 Ω
Output Resistance	700 ± 2 Ω
Insulation Resistance	>1000 MΩ @ 50V DC
Recommended Excitation Voltage	5 to 12V DC/AC
Maximum Supply Voltage	15V DC/AC
Safe Overload	150% FS
Ultimate Load	300% FS
Cable Length	14 meters
Material of Construction	ED1-AS – Alloy Steel ED1-SS – Stainless Steel

The **Double Ended Shear Beam Load Cell** is designed for high-capacity industrial weighing applications such as weighbridges, truck scales, tanks, and silos. Mounted and supported at both ends, it measures load through shear strain for superior accuracy and stability under heavy loads. Its robust construction ensures reliable performance in demanding environments, offering excellent resistance to side loads and long-term durability.

Applications: Weighbridges, platform scales, tank & hopper weighing systems.

Key Features

- ❑ High capacity for heavy-duty weighing
- ❑ Double-ended mounting for maximum stability
- ❑ Accurate shear strain measurement
- ❑ Strong resistance to side and impact loads
- ❑ Rugged, sealed construction for harsh environments



Capacity	A (mm)	B (mm)	C (mm)	D (mm)	E (mm)	F (mm)	G (mm)	H (mm)	R1 (mm)	R2 (mm)
40klb(18T), 45klb(20T)	260.4	162.4	62	53.3	49.3	2.5	215.9	21	25.4	28.5
50klb(22.5T), 75klb(34T)	260.4	162.4	74.7	67.3	62	2.8	216	27	25.4	34.8

➤➤➤ Warranty – One year

* Other Customized loads cell are available on request

